

Custom-Made Wig

User's Instrucional Guide

Aderans



Thank You ... for placing your trust in our Aderans product.

This Guide serves to provide a summary of the specific methods of use & maintenance, so as to ensure the most pleasant & the most lasting experiences from using our custom-made product.

We hope you will optimally derive pleasure from using our products, based on the knowledge & the techniques conveyed in this Guide.

In addition to the specific methods of use & maintenance conveyed here & to be followed, it is also recommended for custom-made products to be periodically serviced. Please feel free to approach our staff for more details.

Contents

Safety Precaution	03
Making use of the One Touch Stopper	05
Putting on the wig (when using the One Touch Stopper)	07
Removing the wig (when using the One Touch Stopper)	09
Putting on the wig (when using the Easy Stopper)	11
Removing the wig (when using the Easy Stopper)	12
Putting on the wig (when using the Quick Touch/ Quick Stopper)	13
Removing the wig (when using the Quick Touch/ Quick Stopper)	14
Putting on the wig (when using the Quick Alpha)	15
Removing the wig (when using the Quick Alpha)	16
Putting on the wig (when using the Double-sided Tape/ Wig Adhesive)	17
Removing the wig (when using the Double-sided Tape/ Wig Adhesive)	19
Professional Haircare Products for Your Hair	20
Putting on the Forehead Stick-on Wig	21
Removing the Forehead Stick-on Wig	22
Professional Haircare Products for Cyber hair and Nature hair products	23
How to wash Cyber hair and Nature hair products	25
Professional Haircare Products for Human Hair Products	27
How to wash Human Hair Products	29
Professional Haircare Products for Extended-use Products	31
Cleaning of Wigs Designed for Extended-use	33
Post-cleaning Adjustment of Wigs Designed for Extended-use	34

In order to make use of the custom-made wig over a long period of time, please take note of the following.

01 Things to take note when wearing the wig.

The purpose of the One Touch Stopper is to fix the wig in place to give the user peace of mind when wearing the wig. Using excessive force in opening or closing it can hurt your scalp (applies to the Double-sided Tape and Wig Adhesive as well).

02 Dangerous to continue using following breakage

The One Touch Stopper may break when excessive force is applied to it, continued usage thereafter may hurt your scalp or hair. You should seek advice from the nearest store in the event that your One Touch Stopper breaks.

03 Do not allow to come into contact with the eyes

Take care to prevent the Wig Remover from coming into contact with your eyes. Should this occur, rinse thoroughly with water immediately. If you experience any discomfort thereafter, do seek medical advice immediately. The Wig Remover is flammable and care should be taken to prevent fires.

04 Products should be used for their specific purpose only

The Double-sided Tape and Wig Adhesive should not be used for purposes other than for putting on the wig. Do make use of the recommended products when putting on the wig.

05 Abnormal sensation(s) to the scalp

In the event of any abnormal sensation(s) (injury, eczema, swells, inflammation etc.) to the scalp, such as the onset of rashes, eczema, itchiness, inflammation, irritation etc., please discontinue usage immediately and proceed to the nearest store or seek advice from our customer service centre.

06 Periodic Maintenance

Please come down to the store regularly to maintain the product(s).


07 Before undergoing CT, MRI or X-ray scanning

Depending on the check-up, images of the wig and Wig Adhesive may appear. Please seek advice from our stores or customer service centre before the check-up.

Remember to trim your hair if it has grown long.

If your hair has grown longer, do come by our store for a cut so that the wig blends in naturally with your own hair.

To ensure proper usage and to achieve the best outcome do that note of the following in everyday use.

 Before using the dedicated accessories, do ensure that you read the "matters to take note of" carefully.

- These can be found on the packaging or bottle label. Improper use may not only cause damage to the accessories but can possibly result in accidents.
- Avoid using in the event that there is anything unusual with your skin (e.g. injury, eczema, swells, inflammation etc.). After using, if rashes, eczema, itchiness, irritation etc. appears, please discontinue using immediately and seek medical attention; at the same time, you should also seek advice from our customer service centre.

Regarding the AD&F Wig Adhesive and Wig Remover

1. Do not expose to fire(s) when using
2. Do not use excessively in places with indoor fire(s)
3. Rupture(s) can occur at high temperatures. Please do not expose to direct sunlight or place near fire(s) where the temperature can exceed 40 °C
4. Please do not place in fire(s)
5. Please do not allow to come into contact with the eyes. Should this occur, rinse thoroughly with water immediately. If you experience any discomfort thereafter, do seek medical advice immediately.
6. Do not put in places where the temperature can be extremely high or extremely low.

Customers using fixed-wearing wig(s) should read the following:

Regarding maintenance

A week after wearing the wig, please come by our store as part of the product maintenance.

During this first session, current usage would be assessed and the regularity of future sessions confirmed.

With regards to the frequency of store visits, we undertake to come up with a relevant proposal based on mutual understanding with the customer.

Depending on hair growth, the wig may not fit as snugly as during the fitting session, should this occur, please come by our store to seek advice. Seek advice from the relevant store or call our customer service centre

Customer service centre

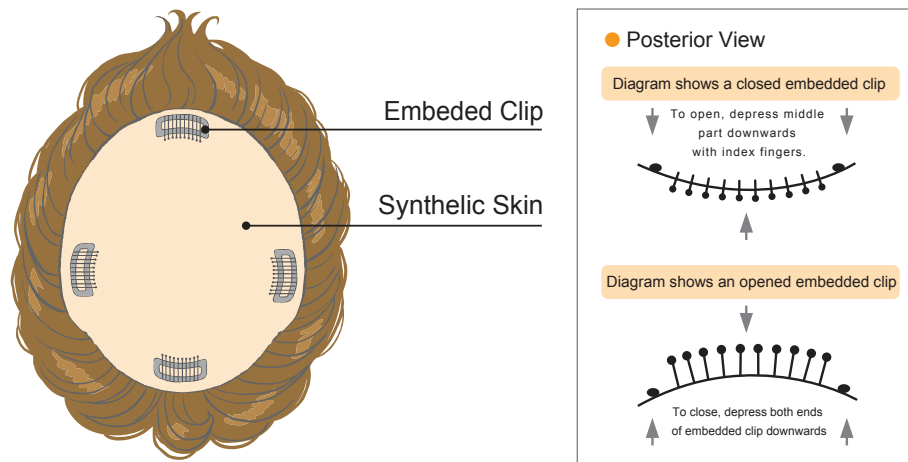
Opening hours

10:00 to 18:30 hrs on weekdays and 09:00 to 17:30 hrs on weekends or public holidays



0120-86-0930

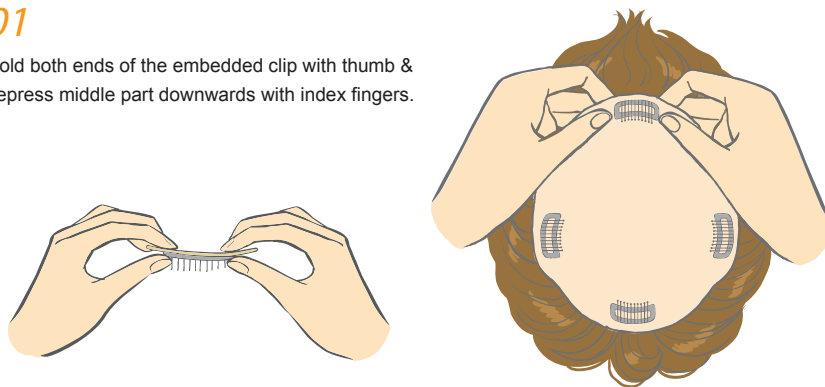
Making use of the One Touch Stopper



*Custom-Made wig can also come without embedded clips, but double-sided Adhesives instead.

01

Hold both ends of the embedded clip with thumb & depress middle part downwards with index fingers.



You can place and remove the One Touch Stopper by yourself.
Please ensure its placing position depending on your hair condition.

02

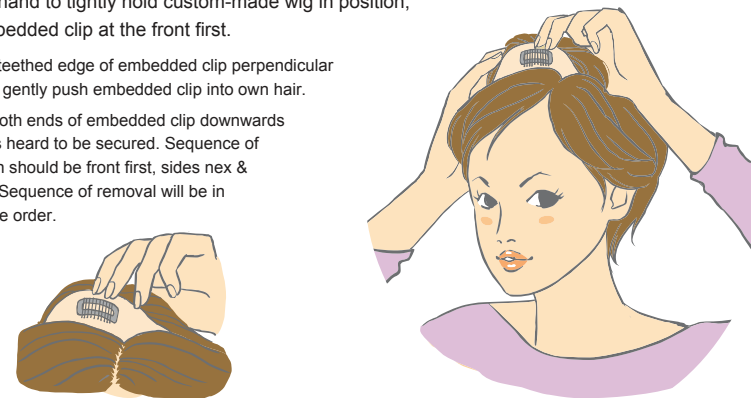
After all embedded clips are opened, place custom-made wig on desired position or own head.



03

Using one hand to tightly hold custom-made wig in position, secure embedded clip at the front first.

- Place the teeth edge of embedded clip perpendicular to scalp & gently push embedded clip into own hair.
- Depress both ends of embedded clip downwards until clip is heard to be secured. Sequence of application should be front first, sides next & near last. Sequence of removal will be in the reverse order.



Putting on the wig (when using the One Touch Stopper)

**Different complexity of styling may require more complex methods & positions of setting.
Please feel free to approach our staff for necessary guidance.



- 01** Before applying custom-made wig, brush it free of entanglements. Release all embedded clips by holding both ends & depressing middle part downwards, beginning from the front.



- 02** Identify the front/rear parts of the custom-made wig before placing on own hair, aligned with own fringe.



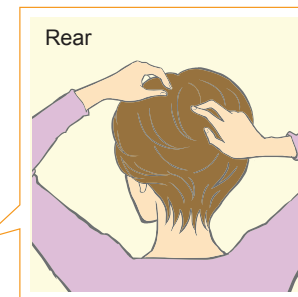
- 03** Place the teathed edge of embedded clip perpendicular to scalp & gently push embedded clip into own hair. Secure at the front by depressing both ends of embedded clip downwards.
**For more detailed instructions on embedded clips, please refer to page 3.



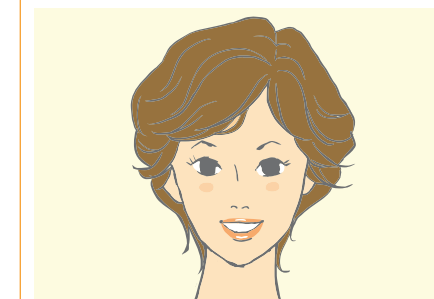
- 04** Hold front part of custom-made wig with one hand, use Aderans brush to style.
**Although custom-made, these wigs can be styled as desired.



- 05** Once desired style is achieved, secure both embedded clips on the sides followed by the rear.



- 06** Continue to blend custom-made wig with own hair using Aderans brush.
**If imbalance around embedded clips is felt, it is recommended for the application procedure to be repeated.



- 07** Application of custom-made wig is then complete.
**If desired, setting of custom-made wig can be continued from here.

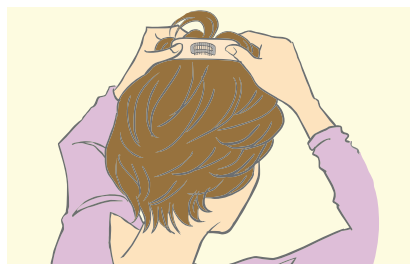
The One Touch Stopper makes it easy to put on your wig.
Design a suitable hairstyle for yourself by brushing carefully in order to mix the strands of your hair and the wig together.

Removing the wig (when using the One Touch Stopper)

*Prices indicated are not inclusive of sales tax



01 Locate each embedded clip and open using your fingertips.



02 Gently remove the hair entangled with the embedded clip.



03 Gently remove the wig according to the flow of your hair on the left and right, front and back.



What it looks like to use the double-sided tape to hold the wig in position

After removing the embedded clips, remove the double-sided tape and make use of cotton pad dabbed in Wig Remover to remove any remaining trace(s) of the double-sided tape.

AD&F Wig Remover 200mL Product price 1,300 Japanese Yen + tax

A lotion which can be used to remove adhesive or double-sided tape from the product. Please ensure that the cotton pad is completely soaked in it before using.

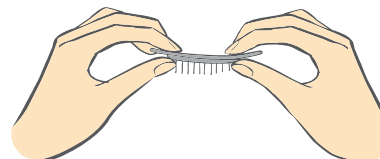


Please avoid pulling or tugging the wig. On top of this, in order not to cause additional stress on your hair and scalp, please open each embedded clip in turn before removing the wig.

Key points to take note when removing each embedded clip

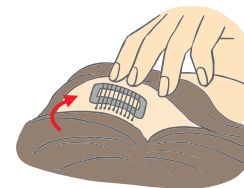
01

Use your index fingers to hold both ends of the embedded clip, place your thumbs at in the middle of the clip before pressing down to open the clip (you would hear a soft click when the clip opens).



02

After removing all the embedded clips on the product, remove the hair entangled on the clips before removing the wig gently according to the flow of your hair on the left and right, front and back.



Putting on the wig (when using the Easy Stopper)

Easy Stopper: it has a soft texture; gently open the clip, insert into the hair and press together to fix nicely in position; very convenient to put on.



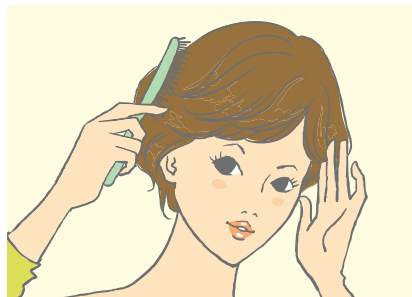
- 01** Before wearing the wig, use the dedicated brush to remove any entanglement(s).



- 02** Open the Easy Stopper, confirm the front and back positions before adjusting the front of your wig until it is in a suitable position with your hairline.



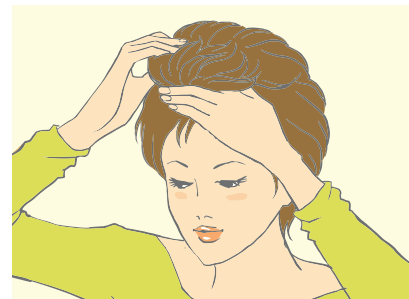
- 03** Press on the Easy Stopper from the top to fix in position.



- 04** Use one hand to hold on to the wig; use the dedicated brush to comb in order to mix the strands of your hair and the wig together while styling your hair.

Removing the wig (when using the Easy Stopper)

Even though the Easy Stopper can be conveniently removed, care should still be taken in removing it to protect your hair and scalp.



- 01** Open all the embedded clips.

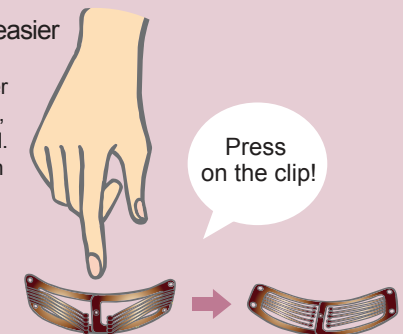


- 02** Raise your wig upwards.

● The Easy Stopper which makes things easier

The angle at which the teeth of the Easy Stopper are inserted is opposite to that of the flow of hair, hence it is able to hold the hair in place very well. When putting it on, the user only has to press on the clip on the left and right making it very easy and convenient to put on.

Removal is equally simple, just open all the embedded clips and raise your wig upwards. The ease of removal reduces any possible stress on the scalp.



Putting on the wig (when using the Quick Touch)

The Quick Touch makes it even more convenient to put on your wig. All you need to do is place the wig on your head and press down for a pretty hairstyle.

*Quick Touch/Quick Stopper



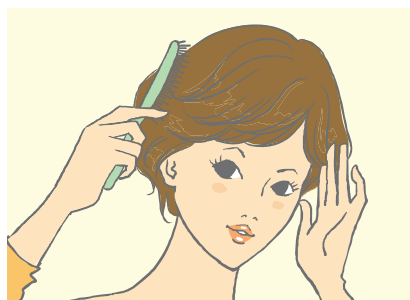
- 01** Before wearing the wig, use the dedicated brush to remove any entanglement(s).



- 02** Adjust the fringe of your wig until it is in a suitable position with your hairline before pressing down gently to complete putting on the wig.



- 03** Customers who like a tighter fit can press down more firmly on the Quick Touch.



- 04** Use one hand to hold on to the wig; use the dedicated brush to comb in order to mix the strands of your hair and the wig together while styling your hair.

Removing the wig (when using the Quick Touch)

Even though the Quick Touch is conveniently used and removed, care should still be taken in removing it to protect your hair.



- 01** Gently lift the front part of the wig and insert your fingers into the gaps in your hair.



- 02** Use your fingers to comb the hair from the front to the back to remove the wig.

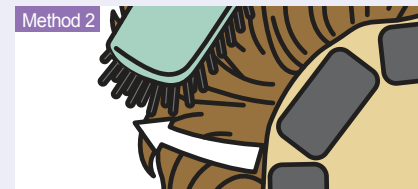
● How to remove the Quick Touch when it becomes entangled with your hair

Method 1



Use the handle of your comb to gently tease out the hair

Method 2



Brush gently and slowly with the comb to remove the entangled hair

*The Quick Touch can be damaged by direct contact with the teeth of the comb, use the comb only at the edges of the Quick Touch.

Simple

Quick Touch*: Inserted into the gaps between hair strands to hold the wig in place. Convenient to put on and remove.



←Quick Touch*

←Your hair

Putting on the wig (when using the Quick Alpha)

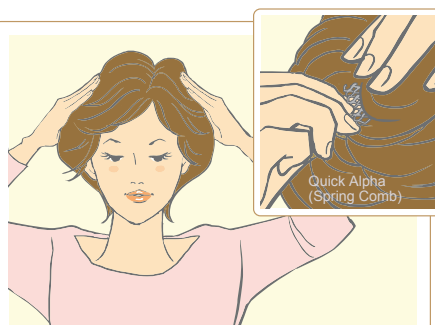
The Quick Alpha is simple and convenient to use to put on your wig, at the same time, it is able to hold the wig firmly in place. When putting on, insert the Quick Alpha into your hair and press down for the perfect hairstyle instantly.



- 01** Before wearing the wig, use the dedicated brush to remove any entanglement(s).



- 02** Adjust the fringe of your wig until it is in a suitable position with your hairline before pressing down gently on your entire head.



- 03** Insert the Quick Alpha until the white rubber portion reaches the bottom of the clip. White rubber portion on the clip



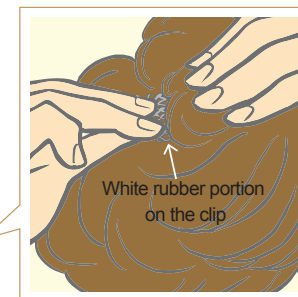
- 04** Use one hand to hold on to the wig; use the dedicated brush to comb in order to mix the strands of your hair and the wig together while styling your hair.

Removing the wig (when using the Quick Alpha)

In order not to cause any stress to your hair or scalp, please make sure that you only remove the wig when the white rubber portion (of the clip) has shifted to the top of the clip.



- 01** Press down on the wig and shift the white rubber portion to the top of the clip at the same time.



- 02** Gently lift the front part of the wig and insert your fingers into the gaps in your hair.



- 03** Use your fingers to comb the hair from the front to the back to remove the wig.

Putting on the wig (when using the Double-sided Tape/ Wig Adhesive)

*The illustration given below is just an example, in fact there are many different ways in which the Double-sided Tape and Wig Adhesive can be used. Depending on the style of the wig, how they are put on is also different. For specifics, do seek advice from our stores.
*Please make use of our dedicated products.



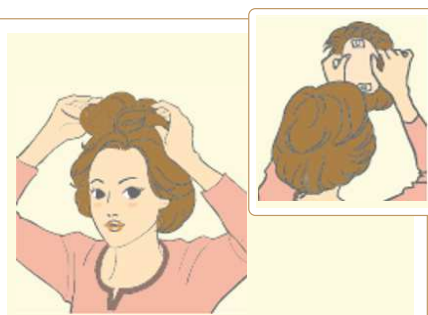
- 01** Paste double-sided tape onto the front of the wig based on the curvature of your forehead; for the back of the wig, leave a gap of 1 cm and paste the double-sided tape.
*Please do not remove the sticker from the double-sided tape



- 02** Before wearing the wig, use the dedicated brush to remove any entanglement(s) followed by removing the sticker from all the double-sided tape.



- 03** When making use of the Wig Adhesive, apply Wig Adhesive the size of a soy bean onto the double-sided tape, spread the Wig Adhesive until it is about the size of your fingertip. Blow with cool air from a hair dryer for about 15 seconds to dry.



- 04** Be sure not to mix up the front and rear of the wig before pasting onto the desired position on your head.
*If you are new to this method, it is best to confirm the position where you want to place your wig before pasting in onto your head.

AD&F Double-sided Tape 15 pieces Product price 600 Japanese Yen + tax

Double-sided tape specially designed for the wearing of wigs.



Wearing the custom-made wig correctly would allow you to truly experience how comfortable it can be and you can then design a suitable hairstyle for yourself.

Left and Right Position



- 05** After putting on the wig, press down gently with your fingertips on the parts with Wig Adhesive before leaving aside for three minutes.

Front and Back Position



- 06** Use the dedicated brush to blend the wig together with your hair and style according to your preference.



- 07** You can also make use of styling agent to do up your hair.

AD&F Wig Remover 20mL Product price 1,300 Japanese Yen + tax

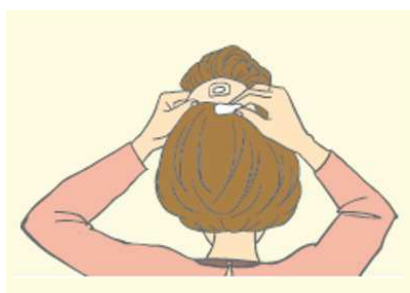
Dedicated remover that is used to get rid of the Double-sided Tape and Wig Adhesive, do soak cotton pad(s) in it completely before using.



Removing the wig

(when using the Double-sided Tape/ Wig Adhesive)

The custom-made wig is very fragile, hence refrain from pulling or tugging at it. In addition, in order not to cause extra stress to your scalp and hair, do make use of the Wig Remover to remove the wig carefully.



- 01** Lift the back of the wig, apply a bit of Wig Remove on cotton pad and gently rub on the Double-sided Tape, followed by removing according to the flow of your hair.



- 02** If Wig Adhesive is left on your head, rub on it with the Wig Remover using cotton pad, at the same time rub gently with your fingertips to soften it.



- 03** Make use of a comb (purpose of the comb is to hold in place) to brush your hair strands in the direction of the scalp to remove the Wig Adhesive.



- 04** After removing the wig, make use of cotton pad(s) soaked in Wig Adhesive to remove the Double-sided Tape, Wig Adhesive and dirt.

AD&F Wig Remover 200mL Product price 1,300 Japanese Yen + tax

Dedicated remover that is used to get rid of the Double-sided Tape and Wig Adhesive, do soak cotton pad(s) in it completely before using.



Professional Haircare Products for Your Hair

*Prices indicated are not inclusive of sales tax, please make use of professional products

Scalp Guard pH Control Shampoo

380mL Product price 3,400 Japanese Yen + tax

No silicone oils, real ingredients with no added preservatives, this is a shampoo without any restriction. It contains non-irritating amino acids cleaning ingredients that can regulate the pH of your hair to keep them in prime condition. It is suitable for use on hair that has been damaged through dyeing or perming.



Scalp Guard pH Control Treatment

380g Product price 4,000 Japanese Yen + tax

No silicone oils, real ingredients with no added preservatives, this is a conditioner without any restriction. It can regulate the pH of your hair to keep them in prime condition, at the same time it nourishes your hair. This is a conditioner which is rich in amino acids and helps in the recovery of damaged hair; it also makes your hair more resilient.



AD&F Hair Perfect Brush

Product price 1,500 Japanese Yen + tax

This is a brush with soft bristles specially designed for washing your hair. It will not cause any damage to the hair net or hair of the wig.



Hair Repro UV Protect

80g Product price 2,000 Japanese Yen + tax

SPF50+ to protect against UV radiation and PA4+, protects both hair and scalp. Water-based product which is non-sticky and doesn't leave white residue, suitable for use on the entire body.



Putting on the Forehead Stick-on Wig

To keep the Forehead Stick-on Wig in prime condition, everyday care and maintenance is very important, the wig should also be treated gently like your own hair.

*Different types of wigs would be worn differently, for the specifics do consult our stores



- 01** Place wig on head only after confirming the front and back positions. The hairline of the wig needs to be aligned with your forehead.



- 02** Before pasting on the forehead, fix the positions of the embedded clips on the back and the sides.



- 03** Depending on the shape of the hair net, take an appropriate amount of Forehead Wig Adhesive and apply evenly on forehead using a cotton bud. After one to two minutes, the Forehead Wig Adhesive which is initially white would turn transparent, now press down gently on the area using your hand.

*Avoid using too much Forehead Wig Adhesive



- 04** Check that the wig is fixed in place before proceeding to style.

Removing the Forehead Stick-on Wig

Please be gentle when removing the Forehead Stick-on Wig in order not to cause too much stress on your scalp and hair.

*Different types of wigs would be worn differently, for the specifics do consult our stores



- 01** Make use of the Forehead Wig Remover to gradually peel off and remove.
* Ensure that the Forehead Wig Remover does not come into contact with your eyes.



- 02** Open the embedded clips on the back and both sides before removing them. Making use of the centre as a guide, bend the front, back, and both sides of the wig into an arc before removing.
* Do be extra careful to prevent the lace of the hair net in front from tearing.



- 03** After removing, if there are traces of the Forehead Wig Adhesive left on the hair net of the forehead, please clean up using the Forehead Wig Remover.

★Forehead Wig Adhesive

10mL Product price 700 Japanese Yen + tax

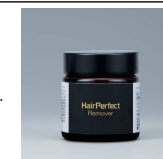
A type of adhesive for use at the hairline of the wig and on areas where the hair is sparse.



★Forehead Wig Remover

80g Product price 1,400 Japanese Yen + tax

A type of remover used for removing adhesive from the wig.



Professional Haircare Products for Cyber hair and Nature hair products

*Prices indicated are not inclusive of sales tax

*denotes free haircare products used in the putting on of the wig after the signing of the contract

*denotes free haircare products used in the putting on of the wig after recontracting

AD&F Wig Cleaner

220mL Product price 1,191 Japanese Yen + tax

Able to remove dirt and sweat from the wig, as well as odour and dirt from the sebum. In addition, it is able to thoroughly remove hair spray and other styling agents.



AD&F Wig Shampoo and Treatment

320mL Product price 3,800 Japanese Yen + tax

Its fine foam does not damage human hair and synthetic human hair, yet is able to thoroughly clean and remove any dirt, and protect the hair on the wig.
*Only for use on the wig and not on your hair.



AD&F Wig Cure Coat (Dry & Wet Type)

150mL Product price 1,800 Japanese Yen + tax

Makes it easier to brush your wig; protects against damage due to the heat from hair-dryer, as well as friction and static electricity from combing; improves the overall condition of the wig.



AD&F Wig Deodorant Spray

80mL Product price 1,700 Japanese Yen + tax

Gently spray onto the hair and scalp of the wig to remove odours due to sweat and dirt.



Cyber Hair and Nature Hair are synthetic human hair similar in texture to real human hair. Making use of the dedicated shampoo and conditioner to care for them would keep them looking natural for much longer.

*Terms and conditions for complimentary maintenance may change without prior notice

AD&F Sericin Hair Towel

34cm x 80cm Product price 2,000 Japanese Yen + tax

Made from extremely fine micro-fibres, absorbs water rapidly, up to twice as fast as normal cotton towels. Soft to touch and absorbs water really quickly to make caring for your wig easier and faster.



Wig Set Stand

Product price 5,500 Japanese Yen + tax

A portable stand that comes in handy for combing your wig after washing, or to make it easier to style your wig.



AD&F Static-free Brush

Product price 1,200 Japanese Yen + tax

Effectively prevents the build-up of static electricity. The teeth of the brush are rounded at the tip to prevent entangling with the hair net, making it easier to style your hair.



Frequency of cleaning your wig

Once the wig starts to smell due to sweat or other factors, and is sticky to the touch, it is time to clean your wig using the dedicated shampoo. (We recommend washing your wig once every three days)

*Cyber Hair: Excellent shape-memory, doesn't change shape readily and easy to care for.

*Nature Hair: Highly similar to real hair, can be easily styled into different hair-dos.

How to wash Cyber hair and Nature hair products

For best applications, the regular maintenance of custom-made wigs is of utmost importance & should be given the same amount of care as for own hair.

** For the full range of Aderans care & maintenance products, please refer to page 11-12

** Different complexity of securing may arise from different types & positions of embedded clips. Please feel free to approach our staff for necessary guidance.



01 Brush thoroughly to free custom-made wig of entanglements, as well as to remove all dust & particles.

** Please start brushing custom-made wig from hair ends.



02 Apply wig cleanser spray to the insides of custom-made wig & leave for 2-3 minutes.

** For extremely filthy insides or after settingspray has been used, leave for 5 minutes after application of wig cleanser spray.



03 Add wig shampoo & conditioner (3-4 shots) into basin of warm water & stir until bubbles appear.



04 Ensure that all embedded clips are closed. Immerse custom-made wig into shampoo water for 2-3 minutes & use wide-toothed brush or fingers to clean custom-made wig.



05 Replace shampoo water & repeat process 3-4 times to rinse thoroughly.



06 Gently pat dry with a towel to remove residual moisture.



07 Ensure that all embedded clips are closed & place custom-made wig on wig stand. Spray treatment mist to custom-made wig, from a distance of 10-15 cm. Brush & style custom-made wig accordingly.

**Do not apply wig care spray more than necessary.



08 Use fingers or Aderans brush to style before allowing to air dry naturally.

**If using hair-dryer to dry custom-made wig, please maintain a minimum distance of 10 cm in between.



09 For best anti-odour effects, apply wig anti-odour spray before application of custom-made wig.

•How to prevent your hair from getting entangled

The wig needs to be placed and removed gently, combing and washing gently in the direction of hair growth would help to prevent the hair from knotting up.



--Quick Touch*

--Quick Touch*

*Quick Touch/One Touch Stopper

Professional Haircare Products for Human Hair Products

*Prices indicated are not inclusive of sales tax

*denotes free haircare products used in the putting on of the wig after the signing of the contract

*denotes free haircare products used in the putting on of the wig after recontracting

AD&F Wig Cleaner

220mL Product price 1,191 Japanese Yen + tax

Able to remove dirt and sweat from the wig, as well as odour and dirt from the sebum. In addition, it is able to thoroughly remove hair spray and other styling agents.



AD&F Wig Shampoo and Treatment

320mL Product price 3,800 Japanese Yen + tax

Its fine foam does not damage human hair and synthetic human hair, yet is able to thoroughly clean and remove any dirt, and protect the hair on the wig.

*Only for use on the wig and not on your hair.



AD&F Wig Cure Coat (Dry & Wet Type)

150mL Product price 1,800 Japanese Yen + tax

Makes it easier to brush your wig; protects against damage due to the heat from hair-dryer, as well as friction and static electricity from combing; improves the overall condition of the wig.



AD&F Wig Deodorant Spray

80mL Product price 1,700 Japanese Yen + tax

Gently spray onto the hair and scalp of the wig to remove odours due to sweat and dirt.



Real Human Hair Wigs are exquisite products made from real human hair. Making use of the dedicated shampoo and conditioner to care for them would keep them looking natural for much longer.

AD&F Sericin Hair Towel

34cm x 80cm Product price 2,000 Japanese Yen + tax

Made from extremely fine micro-fibres, absorbs water rapidly, up to twice as fast as normal cotton towels. Soft to touch and absorbs water really quickly to make caring for your wig easier and faster.



AD&F Skeleton Brush

Product price 1,200 Japanese Yen + tax

Designed for use together with the ceramic anti-bacterial agent, this brush has nylon bristles that can effectively prevent sebum, oil and dirt, and bacteria from clinging onto your wig.



Wig Set Stand

Product price 5,500 Japanese Yen + tax

A portable stand that comes in handy for combing your wig after washing, or to make it easier to style your wig.



Hair Mask

250mL Product price 1,200 Japanese Yen + tax

This is a shampoo that can give hair its lustre and which makes it easy to comb your wig.



Frequency of cleaning your wig

Once the wig starts to smell due to sweat or other factors, and is sticky to the touch, it is time to clean your wig using the dedicated shampoo. (We recommend washing your wig once every three days)

How to wash Human Hair Products

For best applications, the regular maintenance of custom-made wigs of utmost importance & should be given the same amount of care as for own hair.

****For the full range of Aderans care & maintenance products, please refer to page 11-12.**
****Different complexity of securing may arise from different types & positions of embedded clips.**
Please feel free to approach our stag for necessary guidance.



01 Brush thoroughly to free custom-made wig of entanglements, as well as to remove all dust & particles.

****Please start brushing custom-made wig from hair ends.**



02 Apply wig cleanser spray to the insides of custom-made wig & leave for 2-3 minutes.

****For extremely filthy insides or after setting spray has been used, leave for 5 minutes after application of wig cleanser spray.**



03 Add wig shampoo & conditioner (3-4 shots) into basin of warm water & stir until bubbles appear.

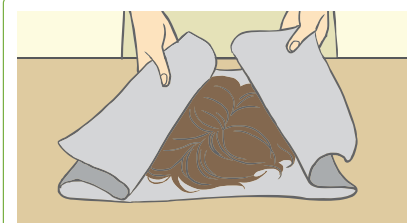


If the wig is very dirty, please wash it twice.

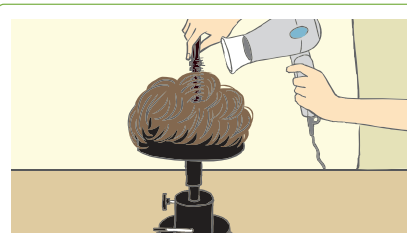
04 Ensure that all embedded clips are closed. Immerse custom-made wig into shampoo water for 2-3 minutes & use wide-toothed brush or fingers to clean custom-made wig.



05 Replace shampoo water & repeat process 3-4 times to rinse thoroughly.



06 Gently pat dry with a towel to remove residual moisture.



07 Ensure that all embedded clips are closed & place custom-made wig on wig stand. Blow dry custom-made wig with hair-dryer.



08 Apply wig care spray to custom-made wig, before using hair brush to bring it shape. Use hair-dryer to further style as desired, but adhering to the sequence of mixed part first, top next & front last.

•How to prevent your hair from getting entangled

The wig needs to be placed and removed gently, combing and washing gently in the direction of hair growth would help to prevent the hair from knotting up.



--Quick Touch*

--Quick Touch*



09 For best anti-odour effects, apply wig anti-odour spray before application of custom-made wig.



Professional Haircare Products for Extended-use Products

*Prices indicated are not inclusive of sales tax

*denotes free haircare products used in the putting on of the wig after the signing of the contract

*denotes free haircare products used in the putting on of the wig after recontracting

★☆☆ Scalp Guard pH Control Shampoo

380mL Product price 3,400 Japanese Yen + tax

No silicone oils, real ingredients with no added preservatives, this is a shampoo without any restriction. It contains non-irritating amino acids cleaning ingredients that can regulate the pH of your hair to keep them in prime condition. It is suitable for use on hair that has been damaged through dyeing or perming.



Scalp Guard pH Control Treatment

380g Product price 4,000 Japanese Yen + tax

No silicone oils, real ingredients with no added preservatives, this is a conditioner without any restriction. It can regulate the pH of your hair to keep them in prime condition, at the same time it nourishes your hair. This is a conditioner which is rich in amino acids and helps in the recovery of damaged hair; it also makes your hair more resilient.



★☆☆ AD&F Wig Cure Coat (Dry & Wet Type)

150mL Product price 1,800 Japanese Yen + tax

Makes it easier to brush your wig; protects against damage due to the heat from hair-dryer, as well as friction and static electricity from combing; improves the overall condition of the wig.



★☆☆ AD&F Wig Deodorant Spray

80mL Product price 1,700 Japanese Yen + tax

Gently spray onto the hair and scalp of the wig to remove odours due to sweat and dirt.



To obtain the best possible outcome, everyday care and maintenance is very important for custom-made wigs that do not have to be removed every day. Making use of professional haircare products would keep them comfortable for much longer.



*There may be changes to the pre-sales content regarding the care and maintenance of products

★AD&F Sericin Hair Towel

34 cm x 80 cm Product price 2,000 Japanese Yen + tax

Made from extremely fine micro-fibres, absorbs water rapidly, up to twice as fast as normal cotton towels. Soft to touch and absorbs water really quickly to make caring for your wig easier and faster.



★AD&F Hair Perfect Brush

Product price 1,500 Japanese Yen + tax

This is a brush with soft bristles specially designed for washing your hair. It will not cause any damage to the hair net or hair of the wig.



★AD&F Double-sided Tape

35 pieces Product price 1,200 Japanese Yen + tax

Double-sided tape specially designed for the wearing of wigs, to be used at the hairline, and areas where the hair is especially thin and fine.



Hair Repro Scalp DEX

Product price 55,000 Japanese Yen + tax

Enzymes Box of 30 sachets Product price 3,000 Japanese Yen + tax

Salt-based remover Product price 3,000 Japanese Yen + tax

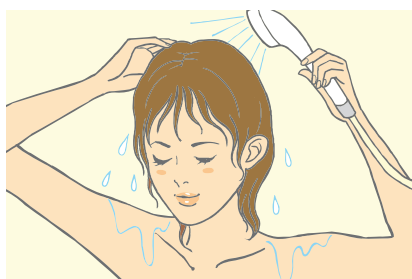
Makes use of a combination of strong and weak jets of water together with enzymes to completely remove dirt from both the surface of the scalp and deep within the pores.



Cleaning of Wigs Designed for Extended-use

To obtain the best possible outcome, everyday care and maintenance is very important for custom-made wigs that do not have to be removed every day. Please take care of your wig like your hair.

*Indicates that price is not inclusive of sales tax



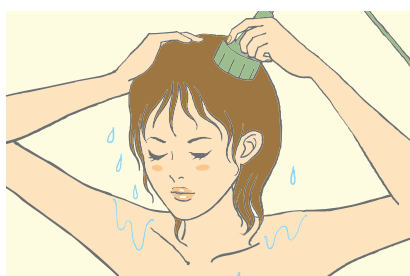
- 01** Please use warm water to wet your hair thoroughly.



- 02** Pour some dedicated shampoo onto your palms and rub together to produce foam before gently rubbing and cleaning the whole head using your fingertips. Do note that using a comb etc. now would damage both your scalp and the product.
*Please do not apply the shampoo directly onto your scalp and the product.



- 03** When rinsing clean, please use the water jets from a shower head to ensure that the shampoo is completely rinsed off.
* It is recommended that you make use of a conditioner that protects the scalp and balances its pH.



- A little suggestion* customers who would like to make use of scalp cleansing massage should use strong jets of water to rinse the scalp clean of shampoo.

Post-cleaning Adjustment of Wigs Designed for Extended-use

Wigs are delicate and fragile products, in order not to cause stress on your scalp or hair, please do not forcefully tug or pull.



- 01** After washing, wrap your hair using the AD&F Sericin Hair Towel and press gently to allow the water to be completely absorbed.
* Please do not use too much force in pressing to avoid causing damage to your scalp or the product.



- 02** Spray the wig conditioner evenly on the surface of the wig before making use of the AD&F Static-free Brush to comb your wig.
*Avoid using excessive wig conditioner
*For hair that has been messed up after sleep, dampen before tidying with the help of a hair dryer on low power settings and the AD&F Static-free Brush.



- 03** Style with the help of a hair dryer on low power settings and the AD&F Hair Perfect Brush.
*Styling agent can be used.

Aderans

Please consult

For product and technical information, please contact

Customer service
hotline



0120-86-0930

Open on weekdays/ weekends and public holidays

Aderans Co.,Ltd.

160-0007 13-4 Araki-cho, Shinjuku-ku, Tokyo, Japan

●Please discontinue use if you experience any discomfort after putting on the wig. ●Prices indicated above are not inclusive of service fees. ●Photographs and content published in the catalogue may not be reproduced without permission, this includes trademarks and products that have been registered. ●Beware of imitations. ●As a result of colour printing, the actual product may be slightly different from that in the photographs published in this catalogue. ●We seek your kind understanding in the following: the prices and specifications of products listed in the catalogue may change; the production and sales of certain products might be discontinued.

 日本毛髪工業協同組合加盟

201403-20000

K010235

(サロン・展用)